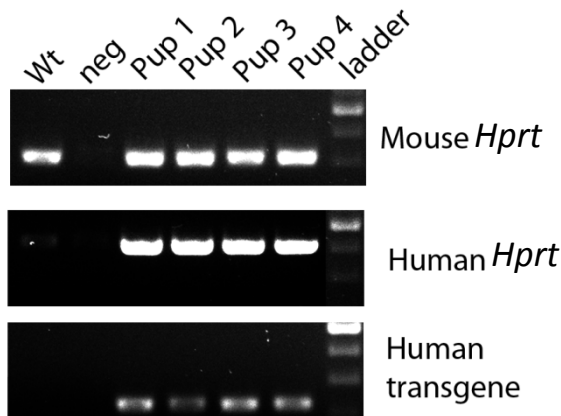


Congratulations: Leavitt Lab Has a New Mouse

MAPS recently assisted the Leavitt Lab with electroporating embryonic stem cells (ESCs) to “knock-in” at a “docking site” on the mouse X Chromosome, a bacterial artificial chromosome (BAC) containing a human disease-associated gene. A round of microinjection of these ESCs produced a number of high-level chimeras, and one has just gone germline, passing the human gene to it’s offspring and starting a new mouse strain!



Mouse Animal Production
Service



(Petkau, 2017)

What’s next for the Leavitt lab? They have already CRISPRed the ESCs so the inserted human transgene now carries a human mutation. MAPS will microinject these ESCs early in 2018 to produce a new mouse model of human disease.

We look forward to working with you to further your research



Centre for Molecular Medicine
and Therapeutics

The Mouse Animal Production Service (MAPS) at CMMT provides the research community with cost effective, state of the art technologies for the generation and maintenance of genetically modified mice. Directed by Dr. Elizabeth M. Simpson, the objective of MAPS is to advance discovery through mouse-based techniques.

SERVICES

- Age specific mice or embryos
- Complimentary project planning meeting
- Cryopreservation of sperm or embryos
- Custom Breeding
- Derivation of new ESC lines
- Embryonic stem cell culture
- CRISPR gRNA targeted mutations
- ESC microinjection
- ESC electroporation
- Germline competent ESCs
- ICR foster mothers
- *In-vitro* fertilization
- Mouse embryonic fibroblasts
- Pseudo pregnant recipients
- Surgical services
- Timed pregnancies
- Vasectomized males

CONTACT US

For more information on our services or to place an order, please contact us:

MAPS team

mapsinfo@cmmt.ubc.ca

<http://cmmt.ubc.ca/facilities-services/mouse-animal-production/>

For more information on other CMMT Core Facilities and Services please contact:

Michael Hockertz

Director of Core Facilities, CMMT

604 875 3816 | hockertz@cmmt.ubc.ca

www.cmmt.ubc.ca/facilities